



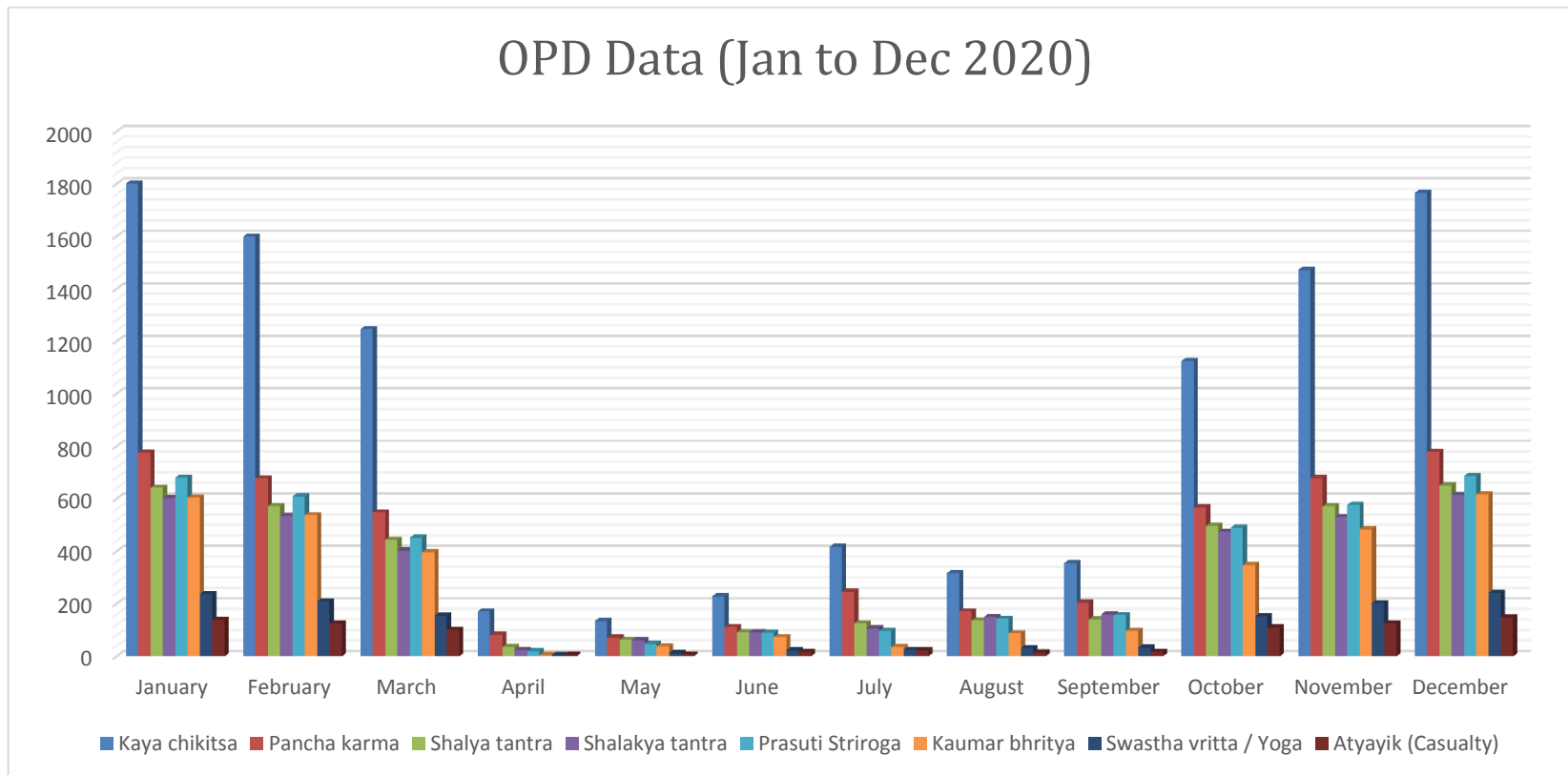
**Rashtrasant Janardhan Swami Ayurved Medical College & Research Center  
Shri Janardhan Swami Ayurved Hospital & Research Center**

**OPD Data (NUMBER OF PATIENTS ATTENDED OPD (1<sup>st</sup> Jan to 31<sup>st</sup> Dec 2020))**

<b>Sr. No.</b>	<b>Month</b>	<b>Kaya chikitsa</b>	<b>Pancha karma</b>	<b>Shalya tantra</b>	<b>Shalakyata tantra</b>	<b>Prasuti Striroga</b>	<b>Kaumar bhritya</b>	<b>Swastha vritta / Yoga</b>	<b>Atyayik (Casualty)</b>	<b>Total</b>
<b>1</b>	<b>January</b>	1801	776	642	603	681	605	237	139	<b>5484</b>
<b>2</b>	<b>February</b>	1599	678	572	535	609	538	209	125	<b>4865</b>
<b>3</b>	<b>March</b>	1246	548	444	403	452	397	155	101	<b>3746</b>
<b>4</b>	<b>April</b>	171	82	36	24	20	5	5	6	<b>349</b>
<b>5</b>	<b>May</b>	135	72	63	62	48	38	13	7	<b>438</b>
<b>6</b>	<b>June</b>	229	112	92	92	90	74	23	17	<b>729</b>
<b>7</b>	<b>July</b>	417	246	126	107	97	36	25	23	<b>1077</b>
<b>8</b>	<b>August</b>	317	171	137	150	143	88	32	15	<b>1053</b>
<b>9</b>	<b>September</b>	355	205	141	160	157	97	34	17	<b>1166</b>
<b>10</b>	<b>October</b>	1125	567	497	475	490	348	153	110	<b>3765</b>
<b>11</b>	<b>November</b>	1472	679	572	531	577	484	203	126	<b>4644</b>
<b>12</b>	<b>December</b>	1766	779	651	615	687	617	242	148	<b>5505</b>
<b>13</b>	<b>Total</b>	<b>10633</b>	<b>4915</b>	<b>3973</b>	<b>3757</b>	<b>4051</b>	<b>3327</b>	<b>1331</b>	<b>834</b>	<b>32821</b>



## Rashtrasant Janardhan Swami Ayurved Medical College & Research Center Shri Janardhan Swami Ayurved Hospital & Research Center





**Rashtrasant Janardhan Swami Ayurved Medical College & Research Center  
Shri Janardhan Swami Ayurved Hospital & Research Center**

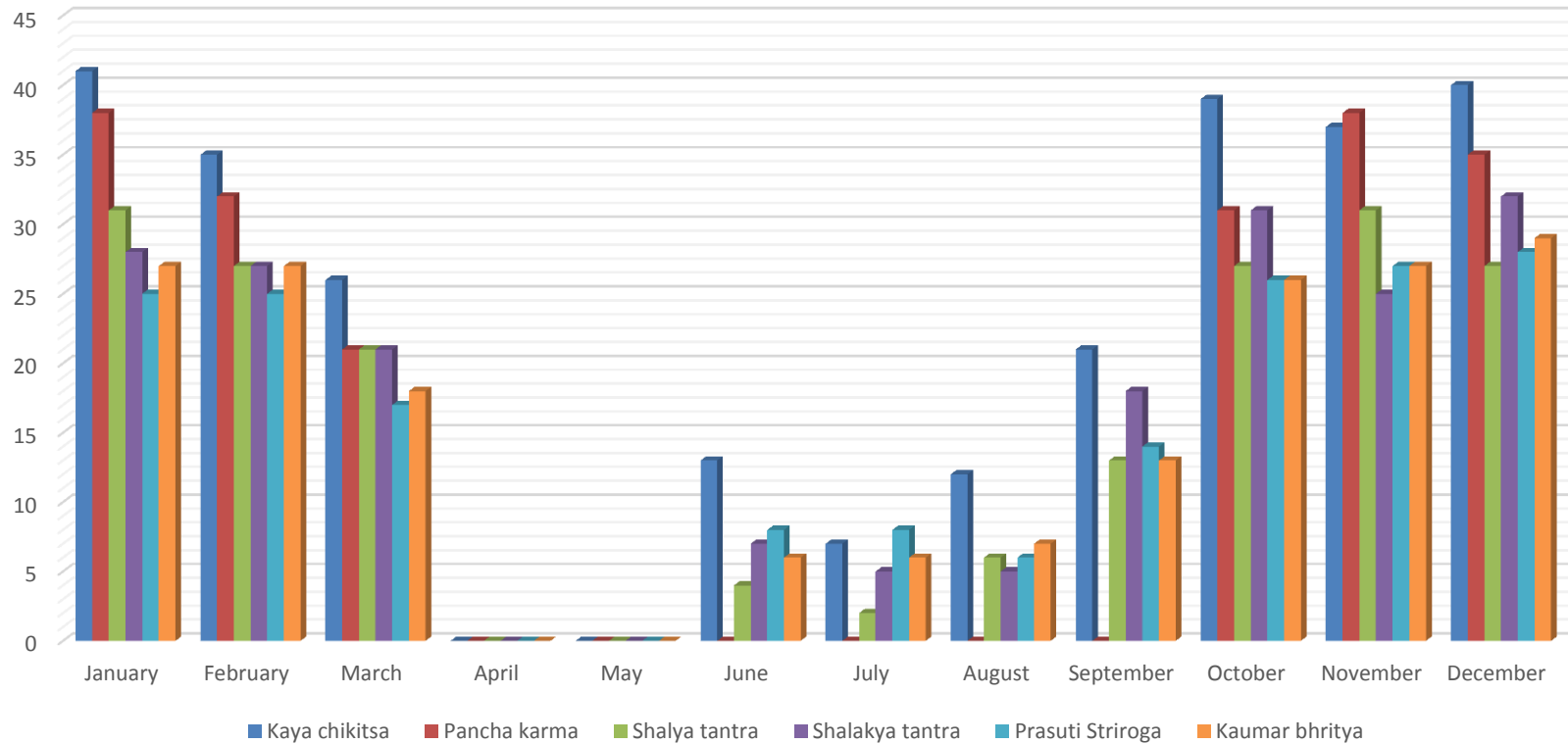
**IPD Data (NUMBER OF IPD PATIENTS from 1<sup>st</sup> Jan to 31<sup>st</sup> Dec 2020)**

<b>Sr. No.</b>	<b>Month</b>	<b>Kaya chikitsa</b>	<b>Pancha karma</b>	<b>Shalya tantra</b>	<b>Shalakyata tantra</b>	<b>Prasuti Striroga</b>	<b>Kaumar bhritya</b>	<b>Total</b>
<b>1</b>	<b>January</b>	41	38	31	28	25	27	<b>190</b>
<b>2</b>	<b>February</b>	35	32	27	27	25	27	<b>173</b>
<b>3</b>	<b>March</b>	26	21	21	21	17	18	<b>124</b>
<b>4</b>	<b>April</b>	0	0	0	0	0	0	<b>0</b>
<b>5</b>	<b>May</b>	0	0	0	0	0	0	<b>0</b>
<b>6</b>	<b>June</b>	13	0	4	7	8	6	<b>38</b>
<b>7</b>	<b>July</b>	7	0	2	5	8	6	<b>28</b>
<b>8</b>	<b>August</b>	12	0	6	5	6	7	<b>36</b>
<b>9</b>	<b>September</b>	21	0	13	18	14	13	<b>79</b>
<b>10</b>	<b>October</b>	39	31	27	31	26	26	<b>180</b>
<b>11</b>	<b>November</b>	37	38	31	25	27	27	<b>185</b>
<b>12</b>	<b>December</b>	40	35	27	32	28	29	<b>191</b>
<b>13</b>	<b>Total</b>	<b>271</b>	<b>195</b>	<b>189</b>	<b>199</b>	<b>184</b>	<b>186</b>	<b>1224</b>



## Rashtrasant Janardhan Swami Ayurved Medical College & Research Center Shri Janardhan Swami Ayurved Hospital & Research Center

### IPD Patients (Jan to Dec 2020)





**Rashtrasant Janardhan Swami Ayurved Medical College & Research Center  
Shri Janardhan Swami Ayurved Hospital & Research Center**

**IPD Data (Total Bed days Occupied 1<sup>st</sup> Jan to 31<sup>st</sup> Dec 2020)**

<b>Sr. No.</b>	<b>Month</b>	<b>Kaya chikitsa</b>	<b>Pancha karma</b>	<b>Shalya tantra</b>	<b>Shalakyta tantra</b>	<b>Prasuti Striroga</b>	<b>Kaumar bhritya</b>	<b>Total</b>
<b>1</b>	<b>January</b>	324	270	180	111	140	128	<b>1153</b>
<b>2</b>	<b>February</b>	342	294	160	116	164	143	<b>1219</b>
<b>3</b>	<b>March</b>	268	227	151	105	142	107	<b>1000</b>
<b>4</b>	<b>April</b>	0	0	0	0	0	0	<b>0</b>
<b>5</b>	<b>May</b>	0	0	0	0	0	0	<b>0</b>
<b>6</b>	<b>June</b>	102	0	20	30	39	26	<b>217</b>
<b>7</b>	<b>July</b>	82	0	11	20	55	46	<b>214</b>
<b>8</b>	<b>August</b>	95	0	29	36	49	37	<b>246</b>
<b>9</b>	<b>September</b>	189	0	98	90	91	75	<b>543</b>
<b>10</b>	<b>October</b>	347	256	170	150	169	161	<b>1253</b>
<b>11</b>	<b>November</b>	390	373	210	128	185	163	<b>1449</b>
<b>12</b>	<b>December</b>	354	329	173	142	184	167	<b>1349</b>
<b>13</b>	<b>Total</b>	<b>2493</b>	<b>1749</b>	<b>1202</b>	<b>928</b>	<b>1218</b>	<b>1053</b>	<b>8643</b>
<b>Bed Occupancy: 23.61%</b>								



## Rashtrasant Janardhan Swami Ayurved Medical College & Research Center Shri Janardhan Swami Ayurved Hospital & Research Center

### IPD Bed Occupancy (Jan to Dec 2020)

